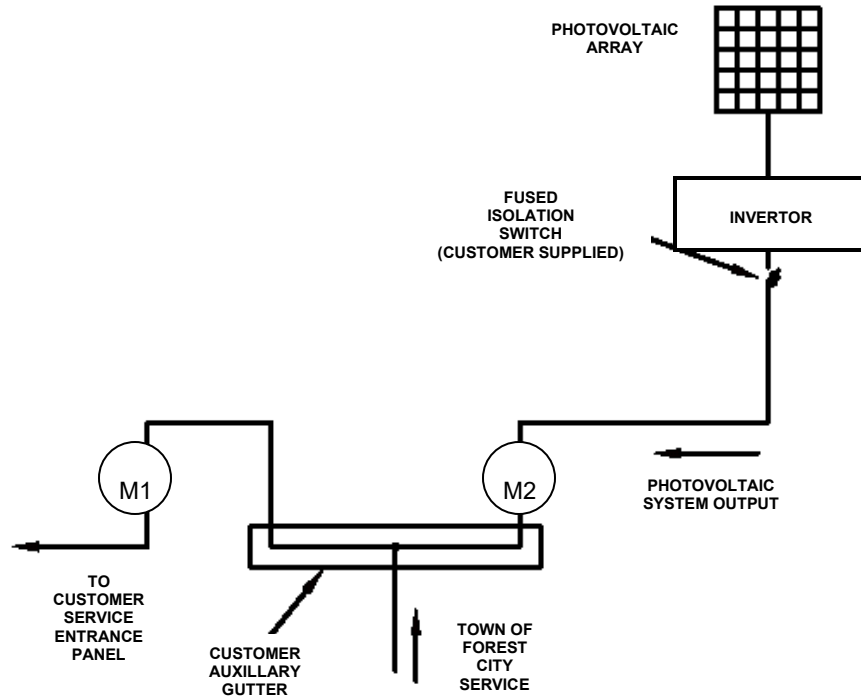


**TOWN OF FOREST CITY
PHOTOVOLTAIC INTERCONNECTION INSTALLATION
SINGLE LINE DIAGRAM FOR SYSTEMS
LESS THAN 20 KW CAPACITY**



NOTES

1. CONNECT TOWN OF FOREST CITY SERVICE TO THE TOP LUGS OF CONSUMPTION BASE AND TO THE BOTTOM OF THE GENERATOR METER BASE.
2. M1 IS THE METER FOR THE RESIDENTIAL SERVICE
3. M2 IS THE METER FOR THE PHOTOVOLTAIC INPUT TO THE SERVICE.
4. INVERTOR / ISOLATION SYSTEM TO BE UL 1741 LISTED AND INSTALLED IN ACCORDANCE WITH THE NATIONAL ELECTRIC CODE (NPPA 70).
5. THE ISOLATION BY THE CUSTOMER TO BE SIZED FOR NATIONAL ELECTRIC CODE MINIMUM SIZE = 100 AMPS LABEL "SOLAR PANEL ISOLATION SWITCH". SWITCH SHALL BE LOCKABLE IN OPEN POSITION.

